



CERTIFICATE OF ANALYSIS

PRODUCT : LIME BLOSSOM FRAGRANT OIL
BATCH NUMBER : 4326403
BEST BEFORE END : JUNE 2021

GENERAL DATA

Appearance : VERY PALE YELLOW TO YELLOW LIQUID
Odour : CHARACTERISTIC

ANALYTICAL DATA

Flash Point (C) : >76
Refractive Index @ 20 C : 1.4983
Specific Gravity @ 20C : 0.9986

ALLERGEN DECLARATION

We hereby confirm that the following item contains the ingredients listed below. Stated are the total levels added plus levels from natural ingredients. The information is supplied to enable compliance with the Seventh Amendment to the EU Cosmetics Directive (76/768/EEC) and the EU Detergents Directive (648/2004/EC).

LIME BLOSSOM

Ingredient	CAS	EC	Concentration (%)
Amyl cinnamal	122-40-7	204-541-5	3%
Butylphenyl methylpropional	80-54-6	201-289-8	1%
Citral	5392-40-5	226-394-6	0.660259%
Citronellol	106-22-9	203-375-0	0.086%
Geraniol	106-24-1	203-377-1	3.195484%
Hexyl cinnamal	101-86-0	202-983-3	0.1%
Hydroxycitronellal	107-75-5	203-518-7	2.7%
Hydroxyisohexyl 3-cyclohexene carboxaldehyde	31906-04-4	250-863-4	1.7%
Isoeugenol	97-54-1	202-590-7	0.1%
Limonene	5989-27-5	227-813-5	1.855172%
Linalool	78-70-6	201-134-4	5.506503%

Regulatory Affairs Department

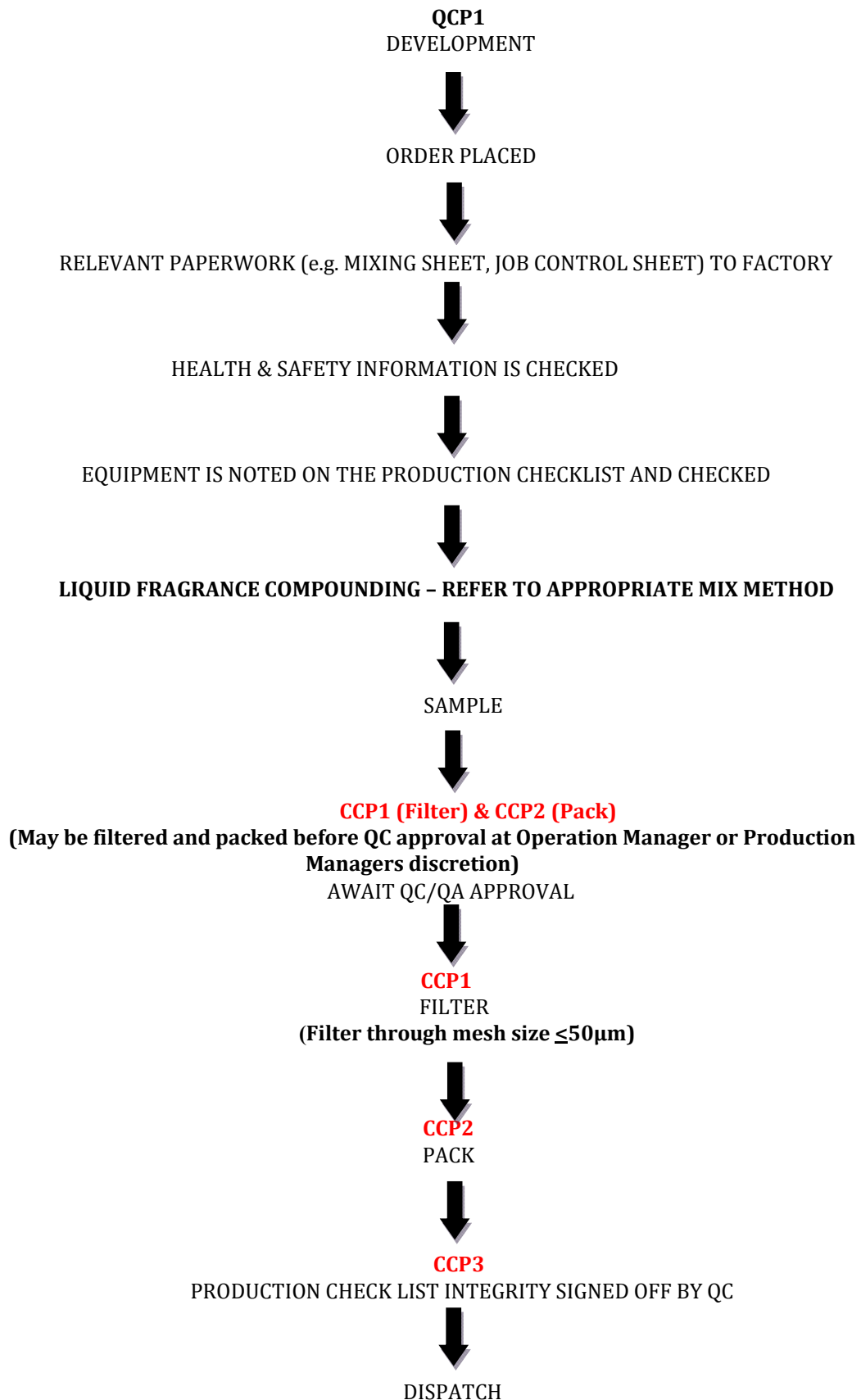


CMR STATEMENT

PRODUCT: Lime Blossom Fragrant Oil

MADAR Corporation Limited confirms that the above fragrance contains Lilial CAS number: 80-54-6 at 1 %, which is classified according to Regulation (EC) No.1272/2008, Classification, Labelling and Packaging of substances and mixtures (CLP) Regulation as Toxic to Reproduction Category 2.

FLOW DIAGRAM INDICATING THE CRITICAL CONTROL POINTS
LIME BLOSSOM FRAGRANCE OIL





GMO STATEMENT
LIME BLOSSOM FRAGRANT OIL

Our Supplier of this product does not knowingly or intentionally use GMO derived materials (according to EC Regulation 1829/2003 and 1830/2003) in the manufacture of their products. It is their policy to only manufacture and sell products that are GMO free within the current limits of detection and in the knowledge that adventitious contamination cannot be excluded.

The company requires from all relevant suppliers, written assurances that materials supplied to our Supplier are free from Genetically Modified Organisms and derivatives thereof. To the best of their knowledge all products manufactured and sold by our Supplier are GMO free.

IFRA CONFORMITY CERTIFICATE

Product: LIME BLOSSOM

We certify that the above item is in compliance with the Standards of the INTERNATIONAL FRAGRANCE ASSOCIATION (IFRA - 48th Amendment / published June 2015), provided it is used in the following classes at a maximum concentration level of:

IFRA classes [see annex for detail]	Maximum level of use (%)
IFRA Class 1 Limit	Not approved
IFRA Class 2 Limit	1.18%
IFRA Class 3.A Limit	11.76%
IFRA Class 3.B Limit	11.76%
IFRA Class 3.C Limit	11.76%
IFRA Class 3.D Limit	11.76%
IFRA Class 4.A Limit	11.76%
IFRA Class 4.B Limit	11.76%
IFRA Class 4.C Limit	11.76%
IFRA Class 4.D Limit	11.76%
IFRA Class 5 Limit	11.76%
IFRA Class 6 Limit	Not approved
IFRA Class 7.A Limit	1.18%
IFRA Class 7.B Limit	1.18%
IFRA Class 8.A Limit	11.76%
IFRA Class 8.B Limit	11.76%
IFRA Class 9.A Limit	11.76%
IFRA Class 9.B Limit	11.76%
IFRA Class 9.C Limit	11.76%
IFRA Class 10.A Limit	11.76%
IFRA Class 10.B Limit	11.76%
IFRA Class 11 Limit	100%

IFRA CONFORMITY CERTIFICATE

For other kinds of application or use at higher concentration levels, a new evaluation may be needed; please contact MADAR Corporation Ltd.

The IFRA Standards regarding use restrictions are based on safety assessments by the Panel of Experts of the RESEARCH INSTITUTE FOR FRAGRANCE MATERIALS (RIFM) and are enforced by the IFRA Scientific Committee.

Evaluation of individual Fragrance ingredients is made according to the safety standards contained in the relevant section of the IFRA Code of Practice.

It is the ultimate responsibility of our customer to ensure the safety of the final product (containing this fragrance) by further testing if need be.

Regulatory Affairs Department

IFRA CONFORMITY CERTIFICATE

ANNEX: Definition of IFRA Classes

Finished product types	IFRA class
Lip Products of all types (solid and liquid lipsticks, balms, clear or colored, etc.); Children's Toys	IFRA Class 1 Limit
Deodorant and Antiperspirant Products of all types including any product with intended or reasonably foreseeable use on the axillae or labelled as such (spray, stick, roll-on, under-arm, deo-cologne and body spray, etc.); Nose pore strips; Fragranced Bracelets	IFRA Class 2 Limit
Hydroalcoholic Products Applied To Recently Shaved Skin (includes After Shave) (Edt range)	IFRA Class 3.A Limit
Hydroalcoholic Products Applied To Recently Shaved Skin (includes After Shave) (Fine fragrance range)	IFRA Class 3.B Limit
Eye Products of all types (eye shadow, mascara, eyeliner, eye make-up, etc.) including eye care; Men's Facial Creams and Balms; Baby Creams, Lotions, Oils; Body Paint for Children	IFRA Class 3.C Limit
Tampons	IFRA Class 3.D Limit
Hydroalcoholic Products applied to unshaved skin (includes aqueous based, alcoholic based and hydroalcoholic) like Cologne, eau de cologne, Eau de Parfum or Parfum (Edt range); Ingredients of Perfume Kits; Scent Pads, Foil packs; Scent Strips for hydroalcoholic products	IFRA Class 4.A Limit
Hydroalcoholic Products applied to unshaved skin (includes aqueous based, alcoholic based and hydroalcoholic) like Cologne, eau de cologne, Eau de Parfum or Parfum (Fine fragrance range)	IFRA Class 4.B Limit
Hair Styling Aids Sprays of all types (pumps, aerosol sprays, etc.); Body Creams, Oils, Lotions of all types (except baby creams, lotions and oils); Body sprays (including Body Mist) with no intended or reasonably foreseeable use on the axillae; Fragrance Compounds for Cosmetic Kits; Foot Care Products; Hair deodorant; Body Paint (except those for children)	IFRA Class 4.C Limit
Fragrancing Cream; Solid perfumes	IFRA Class 4.D Limit
Women's Facial Creams/Facial Make-up; Hand Cream; Hand sanitizers; Facial Masks; Baby Powder and Talc; Hair Permanent and other hair chemical treatments (e.g. relaxers) but not hair dyes; Wipes or Refreshing Tissues for Face, Neck, Hands, Body; Dry Shampoo or Waterless Shampoo	IFRA Class 5 Limit
Mouthwash, including Breath Sprays; Toothpaste	IFRA Class 6 Limit
Intimate Wipes; Baby Wipes	IFRA Class 7.A Limit
Insect Repellent (intended to be applied to the skin)	IFRA Class 7.B Limit
Make-up Removers of all types (not including face cleansers); Hair Styling Aids Non-Spray of all types (mousse, gels, leave-in conditioners etc...); Nail Care; All Powders & Talcs (including baby powders and talcs)	IFRA Class 8.A Limit
Hair Dyes	IFRA Class 8.B Limit
Conditioner (Rinse-Off); Liquid Soap; Shampoos of all types (including baby shampoos); Face Cleansers of all types (washes, gels, scrubs, etc.); Shaving Creams of all types (stick, gels, foams, etc.); All Depilatories (including waxes for mechanical hair removal); Body Washes of all types (including baby washes) and Shower Gels of all types; Bar Soap (Toilet Soap); Bath Gels, Foams, Mousses, Salts, Oils and Other Products added to bathwater	IFRA Class 9.A Limit
Feminine hygiene - pads, liners; Toilet paper; Wheat bags	IFRA Class 9.B Limit
Facial tissues; Napkins; Paper towels; 'Other' Aerosols (incl. air freshener sprays and air freshener pump sprays, but not deodorants / antiperspirants, hair styling aids spray and animal sprays)	IFRA Class 9.C Limit
Handwash Laundry Detergents of all types including concentrates; Fabric Softeners of all types including fabric softener sheets; Household Cleaning Products, Other Types (fabric cleaners, soft surface cleaners, carpet cleaners, etc.); Machine Wash Laundry Detergents (liquids, powders, tablets, etc.) including laundry bleach and concentrates; Hand Dishwashing Detergent including concentrates; Hard Surface Cleaners of all types (bathroom and kitchen cleansers, furniture polish, etc.); Shampoos for pets; Dry cleaning kits; Scented gloves, socks, tights with moisturizers	IFRA Class 10.A Limit
Diapers; Toilet seat wipes	IFRA Class 10.B Limit
All non-skin contact or incidental skin contact including: Candles; Air Fresheners and Fragrancing of all types (concentrated aerosol with metered doses (range 0.05-0.5mL/spray), plug-ins, solid substrate, membrane delivery, electrical); Air Delivery Systems; Cell phone cases; Pot pourri, powders, fragrancing sachets, liquid refills for air fresheners (non-cartridge systems), Reed diffusers; Liquid refills for air fresheners (cartridge systems); Shoe Polishes; Deodorizers/Maskers not intended for skin contact (e.g. fabric drying machine deodorizers, carpet powders); Insecticides (mosquito coil, paper, electrical, for clothing etc.) excluding aerosols; Scent delivery system using a dry air technology that releases a fragrance without sprays, aerosols or heated oils (technology of nebulization); Air freshening crystals; Toilet Blocks; Joss Sticks or Incense Sticks; Machine Dishwash Detergent and Deodorizers; Machine-only Laundry Detergent (e.g. liquitabs); Plastic articles (excluding toys); Fuels; Fragranced lamp ring; Scent pack; Scratch and Sniff (sampling technology); Paints; Cat litter; Animal sprays (all types); Treatment products for textiles (e.g. starch sprays, fabric treated with fragrances after wash, deodorizers for textiles or fabrics); Floor wax; Odored Distilled Water (that can be added to steam irons)	IFRA Class 11 Limit



SAFETY DATA SHEET

LIME BLOSSOM

Section 1. Identification of the substance or the mixture and of the supplier

1.1 Product Identifier

Product identifier: LIME BLOSSOM (Contains: Amyl cinnamal, Geraniol, Hydroxycitronellal, Linalool)

Other identifiers: None

1.2 Relevant identified uses of the substance or mixture and uses advised against

Product uses: For manufacturing purposes only.

1.3 Supplier name of the safety data sheet

Company name: BiOrigins

1.4 Emergency telephone number

Office hours: 01425 655555

Section 2. Hazards identification

2.1 Classification of the substance or mixture

Classification under Regulation (EC) No 1272/2008

Class and category of danger: Skin Corrosion / Irritation Category 2
Eye Damage / Irritation Category 1
Sensitization - Skin Category 1
Hazardous to the Aquatic Environment - Long-term Hazard Category 2
H315, Causes skin irritation.
H317, May cause an allergic skin reaction.
H318, Causes serious eye damage.
H411, Toxic to aquatic life with long lasting effects.

Classification under Directive 1999/45/EC

Hazard symbols: Xi, Irritant.
N, Dangerous for the environment.

Risk phrases: R36, Irritating to the eyes.
R43, May cause sensitization by skin contact.
R51/53, Toxic to aquatic organisms, may cause long-term adverse effects in the aquatic environment.

SAFETY DATA SHEET

LIME BLOSSOM

2.2 Label elements Danger

Signal word:

H315, Causes skin irritation.
H317, May cause an allergic skin reaction.

Hazard statements:

H318, Causes serious eye damage.
H411, Toxic to aquatic life with long lasting effects.

Supplemental Information:

EUH208, Contains Geranyl acetate, Hexyl cinnamal, Citral, Limonene, cis-4(Isopropyl) cyclohexanemethanol, (-)-pin-2(10)-ene;L-6,6-Dimethyl-2-methylenebicyclo(3.1.1)heptane, Isoeugenol, Hydroxyisohexyl 3-cyclohexene carboxaldehyde, Cineole, Butylphenyl methylpropional, Methyl 2-octynoate, 2-Methyl-3-(p-isopropylphenyl)propionaldehyde, α-Methyl-1,3-benzodioxole-5-propionaldehyde, 1-methoxy-4-(1-propenyl)-benzene, nerol. May produce an allergic reaction.

Precautionary statements:

P261, Avoid breathing vapour or dust.
P264, Wash hands and other contacted skin thoroughly after handling.
P272, Contaminated work clothing should not be allowed out of the workplace.
P273, Avoid release to the environment.
P280, Wear protective gloves/eye protection/face protection.
P302/352, IF ON SKIN: Wash with plenty of soap and water.
P305/351/338, IF IN EYES: Rinse cautiously with water for several minutes. Remove contact lenses, if present and easy to do. Continue rinsing.
P310, Immediately call a POISON CENTER or doctor/physician.
P333/313, If skin irritation or rash occurs: Get medical advice/attention.
P362, Take off contaminated clothing and wash before reuse.
P391, Collect spillage.
P501, Dispose of contents/container to approved disposal site, in accordance with local regulations.

Pictograms:



Other hazards:

None



SAFETY DATA SHEET

LIME BLOSSOM

Section 3. Composition / information on ingredients

3.2 Mixtures

Contains:

Name	CAS	EC	REACH Registration No.	%	Classification for (DSD) 67/548/EEC	Classification for (CLP) 1272/2008
------	-----	----	------------------------	---	----------------------------------------	---------------------------------------

SAFETY DATA SHEET

LIME BLOSSOM

2-Phenylethanol	60-12-8	200-456-2		20-25%	Xn ; R22-R36	ATO 4-EDI 2;H302-H319,-
2H-Pyran-4-ol, tetrahydro-4-methyl-2- (2-methylpropyl)-	63500-71-0	405-040-6		5-10%	Xi ; R36	EDI 2;H319,-
Linalool	78-70-6	201-134-4		5-10%	Xi ; R38	SCI 2-EDI 2;H315-H319,-
p-menth-1-en-8-ol	98-55-5	202-680-6		1-5%	Xi ; R38	SCI 2-EDI 2;H315-H319,-
Geraniol	106-24-1	203-377-1		1-5%	Xi ; R38-R41-R43	SCI 2-EDI 1-SS 1;H315- H317-H318,-
Amyl cinnamal	122-40-7	204-541-5		1-5%	Xi-N ; R43-R51/53	SS 1B-EH C2;H317-H411,-
Hydroxycitronellal	107-75-5	203-518-7		1-5%	Xi ; R36-R43	EDI 2-SS 1B;H317-H319,-
β,β,3- Trimethylbenzeneprop anol	103694-68- 4	403-140-4		1-5%	- ; R52/53	EH C3;H412,-
3,7-Dimethyl-1,6- octadien-3-yl acetate	115-95-7	204-116-4		1-5%	Xi ; R38	SCI 2-EDI 2;H315-H319,-
nerol	106-25-2	203-378-7		1-5%	Xi ; R43-R36/38	SCI 2-EDI 2-SS 1B;H315- H317-H319,-
Isopropylphenylbutana l	125109-85- 5	412-050-4		1-5%	N ; R51/53	EH C2;H411,-
Limonene	5989-27-5	227-813-5		1-5%	Xn-N ; R10-R38-R43-R65- R50/53	FL 3-SCI 2-SS 1B-AH 1-EH A1-EH C1;H226-H304- H315-H317-H410,-
Hydroxyisohexyl 3- cyclohexene carboxaldehyde	31906-04-4	250-863-4		1-5%	Xi ; R43	SS 1B;H317,-
cis-4(Isopropyl) cyclohexanemethanol	13828-37-0	237-539-8		1-5%	Xi-N ; R43-R51/53	SS 1B;H317,-
Butylphenyl methylpropional	80-54-6	201-289-8		1-5%	Xn-N ; R22-R43-R62- R51/53	ATO 4-SCI 2-SS 1-REP 2- EH C2;H302-H315-H317- H361-H411,-
Citral	5392-40-5	226-394-6		0.1-1%	Xi ; R38-R43	SCI 2-EDI 2-SS 1B;H315- H317-H319,-
2-Methyl-3-(p- isopropylphenyl) propionaldehyde	103-95-7	203-161-7		0.1-1%	Xi-N ; R38-R43-R51/53	SCI 2-SS 1B;H315-H317,-
(-)-pin-2(10)-ene;L-6,6- Dimethyl-2- methylenebicyclo (3.1.1)heptane	127-91-3	204-872-5		0.1-1%	Xn-N ; R10-R43-R65- R50/53	FL 3-SS 1B;H226-H304- H315-H317,-
p-Mentha-1,4-diene	99-85-4	202-794-6		0.1-1%	Xn ; R10-R65	FL 3-AH 1;H226-H304,-
Cineole	470-82-6	207-431-5		0.1-1%	Xi ; R10-R43	FL 3-SS 1B;H226-H317,-
Geranyl acetate	105-87-3	203-341-5		0.1-1%	Xi-N ; R38-R43-R51/53	SCI 2-SS 1-EH C3;H315- H317-H412,-
1-methoxy-4-(1- propenyl)-benzene	4180-23-8	224-052-0		0.1-1%	Xi-N ; R43-R51/53	SS 1;H317,-
α-Methyl-1,3- benzodioxole-5- propionaldehyde	1205-17-0	214-881-6		0.1-1%	Xi-N ; R43-R51/53	SS 1B-EH C2;H317-H411,-
Hexyl cinnamal	101-86-0	202-983-3		0.1-1%	Xi ; R38-R43	SS 1B-EH C2;H317-H411,-
2,6-Di-tert-butyl-p- cresol	128-37-0	204-881-4		0.1-1%	N ; R50/53	EH A1-EH C1;H410,-
Isoeugenol	97-54-1	202-590-7		0.1-1%	Xn ; R43-R21/22-R36/38	ATO 4-ATD 4-SCI 2-EDI 2- SS 1;H302-H312-H315- H317-H319,-
pin-2(3)-ene;2,6,6- Trimethylbicyclo[3.1.1] hept-2-ene	80-56-8	201-291-9		<0.1%	Xn ; R10-R38-R43-R65	FL 3-SCI 2-SS 1B-AH 1-EH A1-EH C1;H226-H304- H315-H317-H410,-
p-Mentha-1,3-diene	99-86-5	202-795-1		<0.1%	Xn-N ; R10-R22-R65- R51/53	FL 3-ATO 4-AH 1-EH C2; H226-H302-H304-H411,-
Methyl 2-octynoate	111-12-6	203-836-6		<0.1%	Xn ; R22-R43	ATO 4-SS 1A;H302-H317,-
beta-Caryophyllene	87-44-5	201-746-1		<0.1%	Xn ; R65	AH 1;H304,-
6-Methyl-2-(4- methylcyclohex-3-enyl) hept-1,5-diene	495-62-5	207-805-8		<0.1%	Xn ; R38-R43-R65	SCI 2-SS 1B-AH 1;H304- H315-H317,-

SAFETY DATA SHEET

LIME BLOSSOM

7-Methyl-3-methyleneocta-1,6-diene	123-35-3	204-622-5		<0.1%	Xn ; R10-R38-R65	FL 3-SCI 2-EDI 2-AH 1; H226-H304-H315-H319-H412,-
p-mentha-1,5-diene	99-83-2	202-792-5		<0.1%	Xn ; R10-R65	FL 3-AH 1;H226-H304,-

Substances with Community workplace exposure limits, not listed above:

Name	CAS	EC	%
Diethyl phthalate	84-66-2	201-550-6	30.57%

Substances that are persistent, bioaccumulative and toxic or very persistent and very bioaccumulative, greater than 0.1%:

Not Applicable

Section 4. First-aid measures

4.1 Description of first aid measures

IF ON SKIN: Wash with plenty of soap and water.

IF IN EYES: Rinse cautiously with water for several minutes. Remove contact lenses, if present and easy to do. Continue rinsing.

Immediately call a POISON CENTER or doctor/physician.

4.2 Most important symptoms and effects, both acute and delayed

Causes skin irritation.

May cause an allergic skin reaction.

Causes serious eye damage.

4.3 Indication of any immediate medical attention and special treatment needed

None expected, see Section 4.1 for further information.

SECTION 5: Firefighting measures

5.1 Extinguishing media

Suitable media: Carbon dioxide, Dry chemical, Foam.

5.2 Special hazards arising from the substance or mixture

In case of fire, may be liberated: Carbon monoxide, Unidentified organic compounds.

5.3 Advice for fire fighters:

In case of insufficient ventilation, wear suitable respiratory equipment.

SAFETY DATA SHEET

LIME BLOSSOM

Section 6. Accidental release measures

6.1 Personal precautions, protective equipment and emergency procedures:

Avoid inhalation. Avoid contact with skin and eyes. See protective measures under Section 7 and 8.

6.2 Environmental precautions:

Keep away from drains, surface and ground water, and soil.

6.3 Methods and material for containment and cleaning up:

Remove ignition sources. Provide adequate ventilation. Avoid excessive inhalation of vapours. Contain spillage immediately by use of sand or inert powder. Dispose of according to local regulations.

6.4 Reference to other sections:

Also refer to sections 8 and 13.

Section 7. Handling and storage

7.1 Precautions for safe handling:

Keep away from heat, sparks, open flames and hot surfaces. - No smoking. Use personal protective equipment as required. Use in accordance with good manufacturing and industrial hygiene practices. Use in areas with adequate ventilation. Do not eat, drink or smoke when using this product.

7.2 Conditions for safe storage, including any incompatibilities:

Store in a well-ventilated place. Keep container tightly closed. Keep cool. Ground/bond container and receiving equipment. Use explosion-proof electrical, ventilating and lighting equipment. Use only non-sparking tools. Take precautionary measures against static discharge.

7.3 Specific end use(s):

Use in accordance with good manufacturing and industrial hygiene practices.

Section 8. Exposure controls/personal protection

8.1 Control parameters

Workplace exposure limits:

Ingredient	CAS	EC	Description			Reference
Diethyl phthalate	84-66-2	201-550-6	Long-term exposure limit (8-hour TWA reference period)	-	5	UK EH40 JUN 2012
			Short-term exposure limit (15-minute reference period)	-	10	UK EH40 JUN 2012

SAFETY DATA SHEET

LIME BLOSSOM

8.2 Exposure Controls

Eye / Skin Protection

Wear protective gloves/eye protection/face protection

Respiratory Protection

Ensure adequate and ongoing ventilation is maintained in order to prevent build up of excessive vapour and to ensure occupational exposure limits are adhered to. If appropriate, and depending on your patterns and volumes of use, the following engineering controls may be required as additional protective measures: a) Isolate mixing rooms and other areas where this material is used or openly handled. Maintain these areas under negative air pressure relative to the rest of the plant. b) Employ the use of Personal protective equipment - an approved, properly fitted respirator with organic vapour cartridges or canisters and particulate filters. c) Use local exhaust ventilation around open tanks and other open sources of potential exposures in order to avoid excessive inhalation, including places where this material is openly weighed or measured. In addition, use general dilution ventilation of the work area to eliminate or reduce possible worker exposures. d) Use closed systems for transferring and processing this material.

Also refer to Sections 2 and 7.

Section 9. Physical and chemical properties

9.1 Information on basic physical and chemical properties

Appearance:	Very Pale Yellow To Yellow Liquid
Odour:	Characteristic
pH:	Not determined
Initial boiling point / range:	Not determined
Flash point:	> 76 °C
Vapour pressure:	Not determined
Relative density:	0.9940 - 1.0060
Solubility(ies):	Not determined
9.2 Other information:	None available

Section 10. Stability and reactivity

10.1 Reactivity:

Presents no significant reactivity hazard, by itself or in contact with water.

10.2 Chemical stability:

Good stability under normal storage conditions.

10.3 Possibility of hazardous reactions:

Not expected under normal conditions of use.

10.4 Conditions to avoid:

Avoid extreme heat.

SAFETY DATA SHEET

LIME BLOSSOM

10.5 Incompatible materials:

Avoid contact with strong acids, alkalis or oxidising agents.

10.6 Hazardous decomposition products:

Not expected.

Section 11. Toxicological information

11.1 Information on toxicological effects

This mixture has not been tested as a whole for health effects. The health effects have been calculated using the methods outlined in Regulation (EC) No 1272/2008 (CLP).

Causes skin irritation.

May cause an allergic skin reaction.

Causes serious eye damage.

Assumed Toxicity Value (LD50 or ATE) for Acute Oral Toxicity:	>5000
Assumed Toxicity Value (LD50 or ATE) for Acute Dermal Toxicity:	>5000
Assumed Toxicity Value (LC50 or ATE) for Acute Inhalation Toxicity:	Not Available
Inhalation Route:	Not Available

Information about hazardous ingredients in the mixture

Ingredient	CAS	EC	LD50/ATE Oral	LD50/ATE Dermal	LC50/ATE Inhalation	LC50 Route
Butylphenyl methylpropional	80-54-6	201-289-8	1390	Not available	Not available	Not available

Refer to Sections 2 and 3 for additional information.

Section 12. Ecological information

12.1 Toxicity:

Toxic to aquatic life with long lasting effects.

12.2 Persistence and degradability: Not available

12.3 Bioaccumulative potential: Not available

12.4 Mobility in soil: Not available

12.5 Results of PBT and vPvB assessment:

This substance does not meet the PBT/vPvB criteria of REACH, annex XIII.

12.6 Other adverse effects:

This material contains *% Volatile Organic Compounds. : 3.213283 %

SAFETY DATA SHEET

LIME BLOSSOM

Section 13. Disposal considerations

13.1 Waste treatment methods:

Dispose of in accordance with local regulations. Avoid disposing into drainage systems and into the environment. Empty containers should be taken to an approved waste handling site for recycling or disposal.

Section 14. Transport information

- 14.1 UN number: UN3082
- 14.2 UN Proper Shipping Name: ENVIRONMENTALLY HAZARDOUS SUBSTANCE, LIQUID, N.O.S. (Limonene, Amyl cinnamal)
- 14.3 Transport hazard class(es): 9
- Sub Risk: -
- 14.4. Packing Group: III
- 14.5 Environmental hazards: This is an environmentally hazardous substance.
- 14.6 Special precautions for user: None additional
- 14.7 Transport in bulk according to Annex II of MARPOL73/78 and the IBC Code:
Not applicable

Section 15. Regulatory information

15.1 Safety, health and environmental regulations/legislation specific for the substance or mixture

None additional

15.2 Chemical Safety Assessment

A Chemical Safety Assessment has not been carried out for this product.

Section 16. Other information

Key to revisions:

Not applicable

Key to abbreviations:

Abbreviation	Meaning
AH 1	Aspiration Hazard Category 1
ATD 4	Acute Toxicity - Dermal Category 4
ATO 4	Acute Toxicity - Oral Category 4
EDI 1	Eye Damage / Irritation Category 1
EDI 2	Eye Damage / Irritation Category 2
EH A1	Hazardous to the Aquatic Environment - Acute Hazard Category 1
EH C1	Hazardous to the Aquatic Environment - Long-term Hazard Category 1
EH C2	Hazardous to the Aquatic Environment - Long-term Hazard Category 2
EH C3	Hazardous to the Aquatic Environment - Long-term Hazard Category 3



SAFETY DATA SHEET

LIME BLOSSOM

FL 3	Flammable Liquid, Hazard Category 3
H226	Flammable liquid and vapour.
H302	Harmful if swallowed.
H304	May be fatal if swallowed and enters airways.
H312	Harmful in contact with skin.
H315	Causes skin irritation.
H317	May cause an allergic skin reaction.
H318	Causes serious eye damage.
H319	Causes serious eye irritation.
H361	Suspected of damaging fertility or the unborn child (exposure route).
H410	Very toxic to aquatic life with long lasting effects.
H411	Toxic to aquatic life with long lasting effects.
H412	Harmful to aquatic life with long lasting effects.
P202	Do not handle until all safety precautions have been read and understood.
P210	Keep away from heat, sparks, open flames and hot surfaces. - No smoking.
P233	Keep container tightly closed.
P240	Ground/bond container and receiving equipment.
P241	Use explosion-proof electrical, ventilating and lighting equipment.
P242	Use only non-sparking tools.
P243	Take precautionary measures against static discharge.
P261	Avoid breathing vapour or dust.
P264	Wash hands and other contacted skin thoroughly after handling.
P270	Do not eat, drink or smoke when using this product.
P272	Contaminated work clothing should not be allowed out of the workplace.
P273	Avoid release to the environment.
P280	Wear protective gloves/eye protection/face protection.
P301/310	IF SWALLOWED: Immediately call a POISON CENTER or doctor/physician.
P301/312	IF SWALLOWED: call a POISON CENTER or doctor/physician if you feel unwell.
P302/352	IF ON SKIN: Wash with plenty of soap and water.
P303/361/353	IF ON SKIN (or hair): Remove/take off immediately all contaminated clothing. Rinse skin with water/shower.
P305/351/338	IF IN EYES: Rinse cautiously with water for several minutes. Remove contact lenses, if present and easy to do. Continue rinsing.
P308/313	IF exposed or concerned: Get medical advice/attention.
P310	Immediately call a POISON CENTER or doctor/physician.
P312	Call a POISON CENTRE or doctor/physician if you feel unwell.
P330	Rinse mouth.
P331	Do not induce vomiting.
P332/313	If skin irritation occurs: Get medical advice/attention.
P333/313	If skin irritation or rash occurs: Get medical advice/attention.
P337/313	If eye irritation persists: Get medical advice/attention.
P362	Take off contaminated clothing and wash before reuse.
P363	Wash contaminated clothing before reuse.
P370/378	In case of fire: Use carbon dioxide, dry chemical, foam for extinction.



SAFETY DATA SHEET

LIME BLOSSOM

P391	Collect spillage.
P403/235	Store in a well-ventilated place. Keep cool.
P405	Store locked up.
P501	Dispose of contents/container to approved disposal site, in accordance with local regulations.
REP 2	Toxic to Reproduction Category 2
SCI 2	Skin Corrosion / Irritation Category 2
SS 1	Sensitization - Skin Category 1
SS 1A	Sensitization - Skin Category 1A
SS 1B	Sensitization - Skin Category 1B

The information in this safety data sheet is to the best of our knowledge true and accurate but all data, instructions, recommendations and/or suggestions are made without guarantee.

SPECIFICATION

Product: LIME BLOSSOM FRAGRANT OIL

GENERAL DATA

Odour: Characteristic
Appearance: Very Pale Yellow To Yellow Liquid

ANALYTICAL DATA

Flash Point: > 76 °C
Flash Point (Fahrenheit): > 169 °F
Specific Gravity @ 20°C: 0.9940 - 1.0060
Refractive Index @ 20°C: 1.4960 - 1.5080

STORAGE AND HANDLING

STORAGE: Store in well-sealed containers in cool, dry, dark place. Ideal temperature between 15-25°C (59-77°F). It is not recommended to store this material below 10°C or above 25°C.

Shelf Life Unopened (months): 12

Prepared by: Quality Control Department

This specification was processed automatically and therefore has no signature